



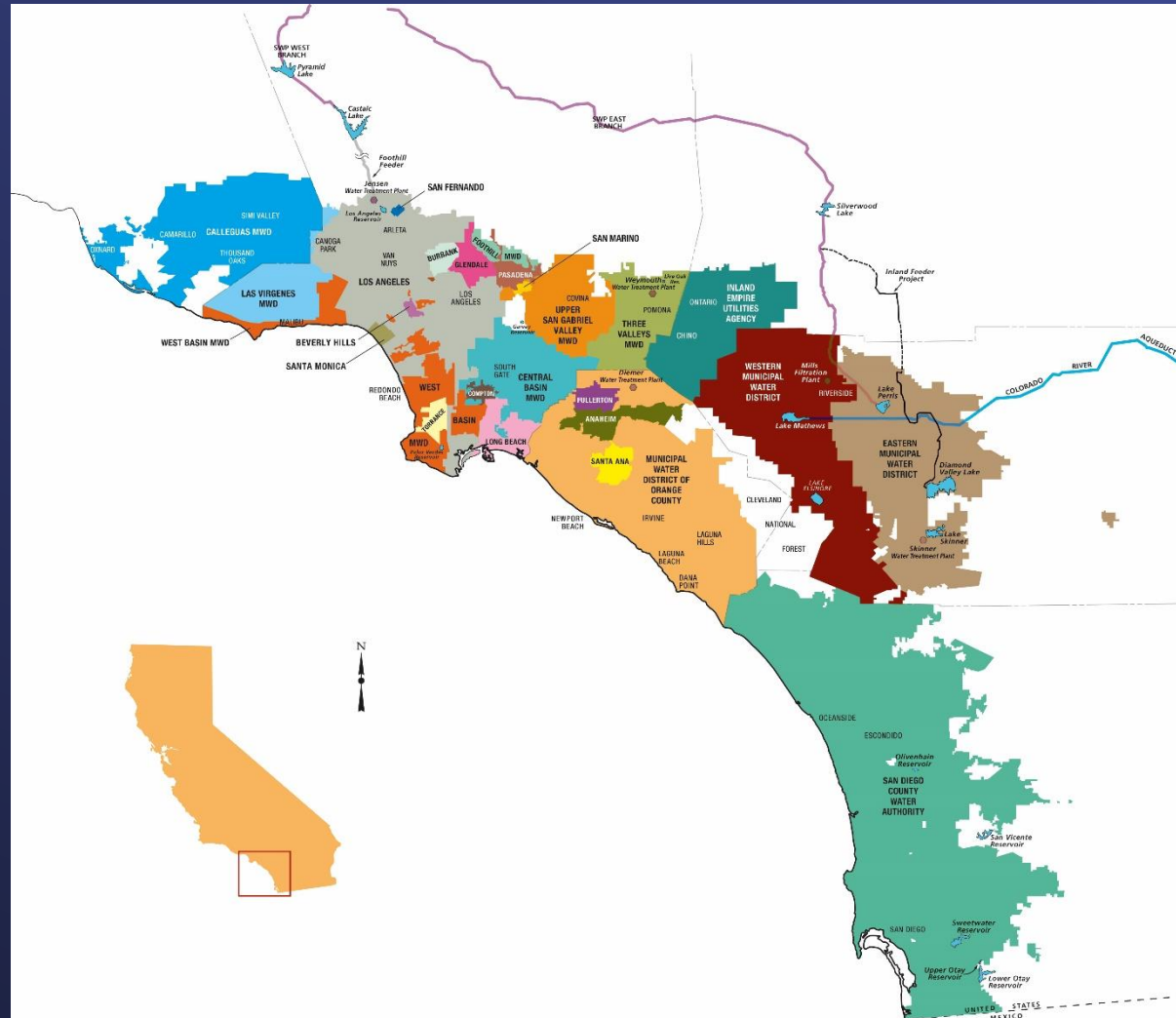
Addressing Drought & Climate Resiliency and Delta Conservation Plan.

Jacquelyn McMillan, Pr. Government Affairs and Regional Rep.
Ventura County's Water Crises and California's Drought
September 8, 2022



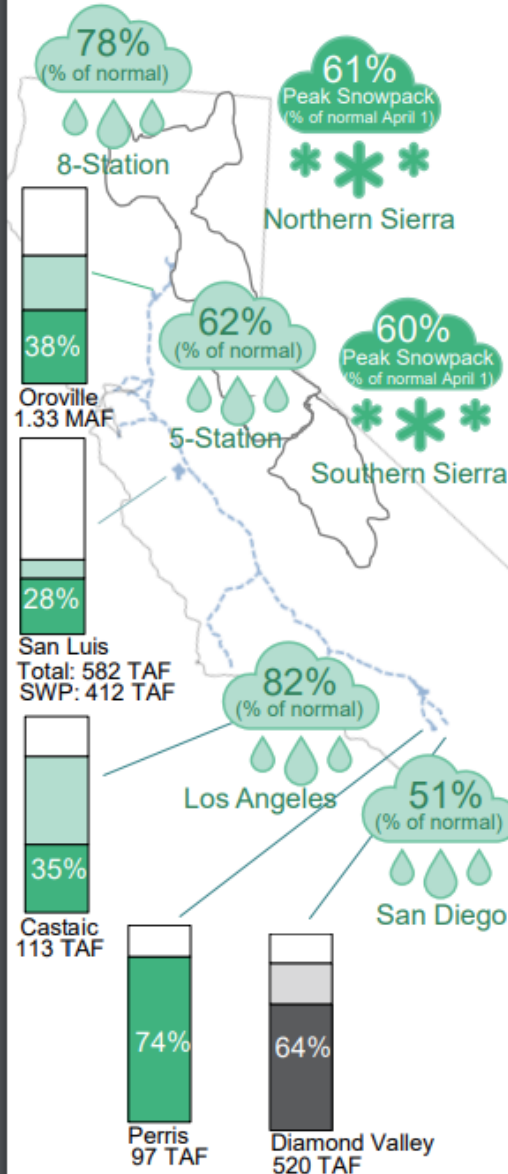
The Metropolitan Water District of Southern California

- Nation's largest wholesale water provider
- Service area: 19 million people/5,200 square miles/parts of six counties
- 26 member agencies
- Supports \$1 trillion regional economy
- Imports water from Northern Sierra and the Colorado River, invests in local projects



State Water Project Resources

SWP Table A – 5% - 95,575 AF



WATER SUPPLY CONDITIONS REPORT

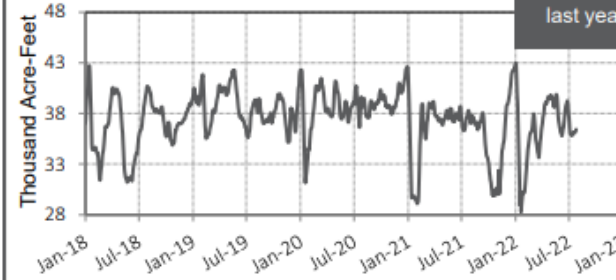
Water Year 2021-2022
As of: August 24, 2022

Metropolitan Resources

Lake Skinner Storage

Capacity: 44 TAF

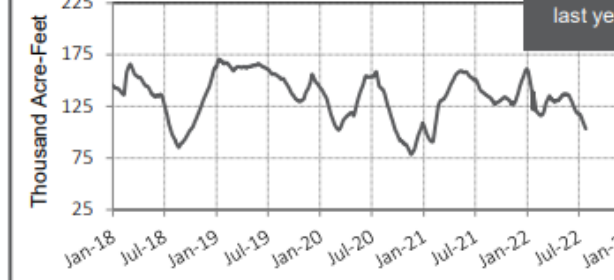
1.9 TAF
less than
last year



Lake Mathews Storage

Capacity: 182 TAF

36 TAF
less than
last year



MWD WSDM Storage

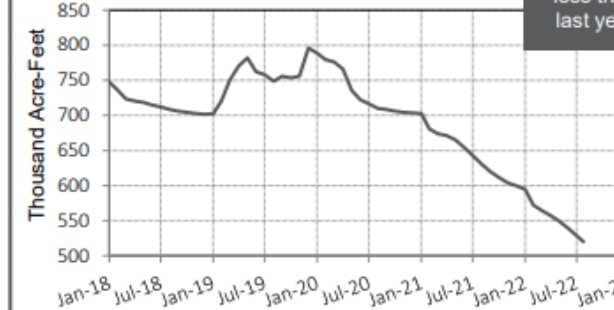
Calendar Year 2022

	Take Capacity
Colorado River Aqueduct Delivery System	255 TAF
State Water Project System	188 TAF
In-Region Supplies and WSDM Actions	426 TAF
Other Programs	11 TAF
Total WSDM Storage Take Capacity	880 TAF

Diamond Valley Lake Storage

Capacity: 810 TAF

114 TAF
less than
last year



Highlights

- For more information on the current drought, including the Emergency Conservation Program tracking:
 - <https://www.mwdh2o.com/how-we-plan/drought/>
- For more information on the upcoming emergency repair to the Upper Feeder pipeline:
 - <https://www.mwdh2o.com/projects-in-your-community/>

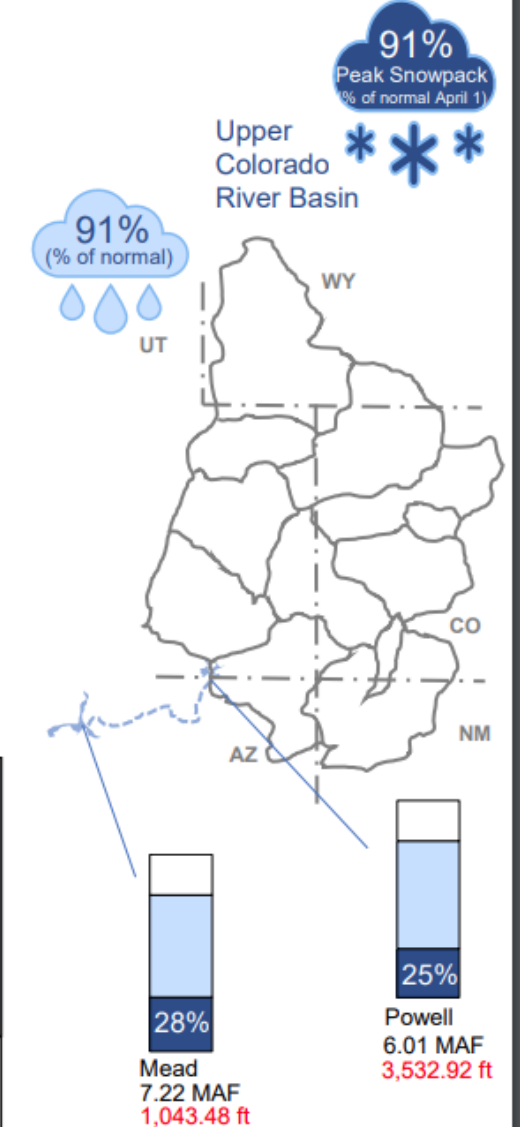


This report is produced by the Water Resource Management Group and contains information from various federal, state, and local agencies. The Metropolitan Water District of Southern California cannot guarantee the accuracy or completeness of this information. Readers should refer to the relevant state, federal, and local agencies for additional or for the most up to date water supply information. Reservoirs, lakes, aqueducts, maps, watersheds, and all other visual representations on this report are not drawn to scale. Questions? Email mferreira@mwdh2o.com

<http://www.mwdh2o.com/WSCR>

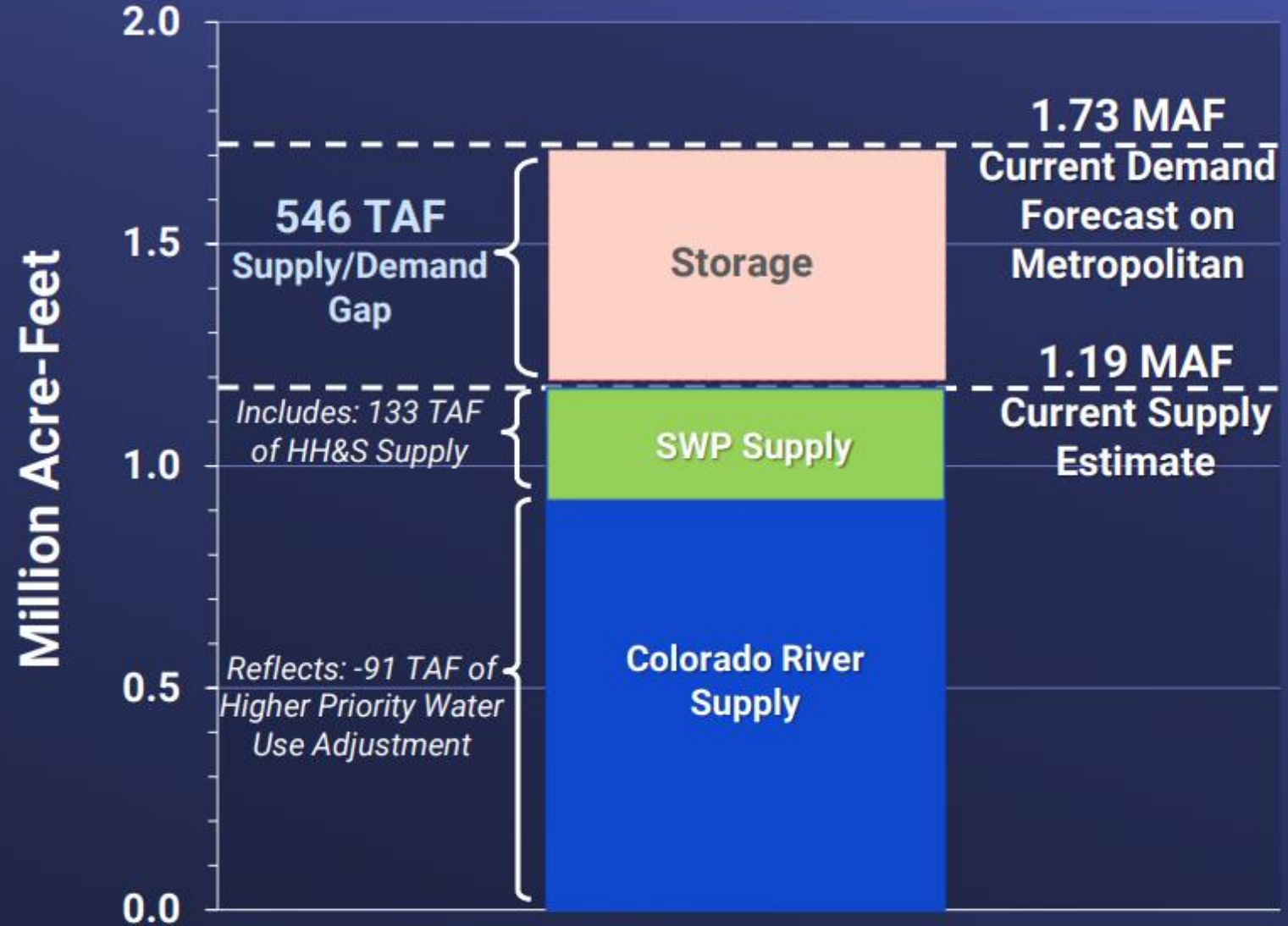
Colorado River Resources

Projected CRA Diversions – 1,117,000 AF



WSDM Supply Demand Balance

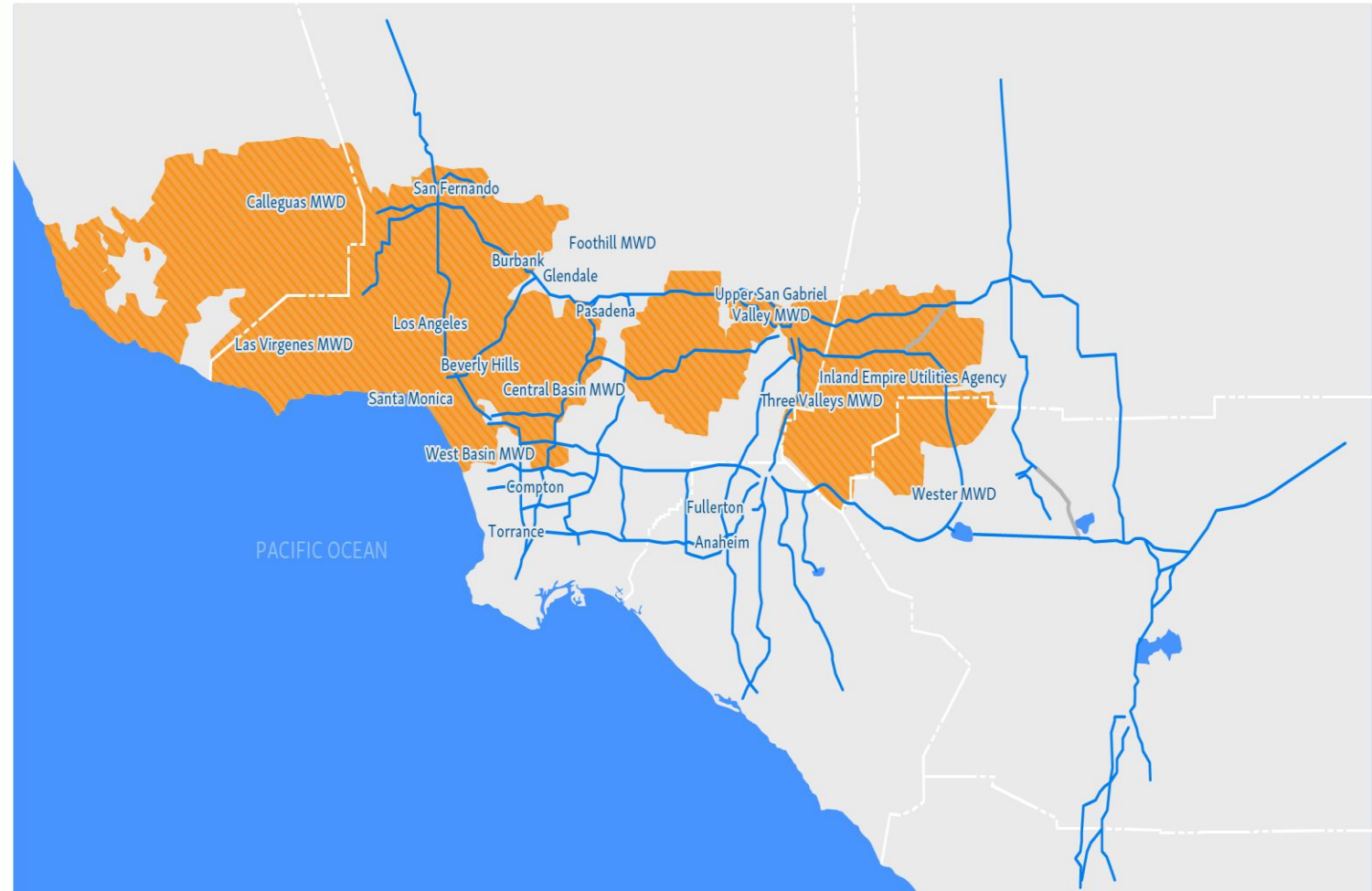
Regional View



Addressing Drought
& Climate Resilience_

SWP- Dependent Areas.

In Metropolitan's
service area.

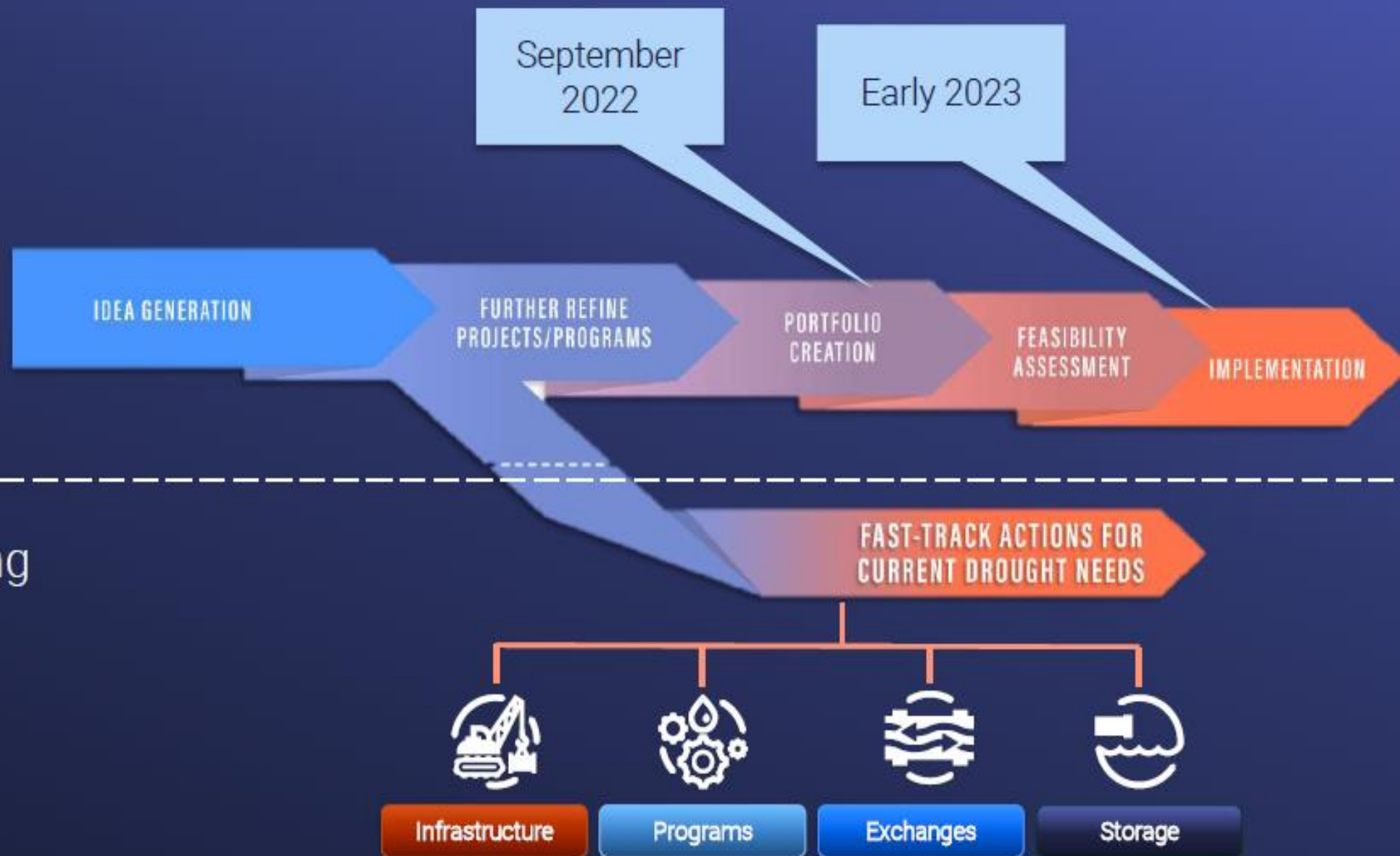


Drought Action Development

Two Parallel Tracks

Planning long-term actions for future extreme drought

Implementing near-term actions for current drought emergency



SWP Dependent Area

West Region Drought Actions

System
Infrastructure
Modifications

Programs

Exchanges

Storage

Near-Term Actions



West Region Drought Actions

SWP Dependent Area

System
Infrastructure
Modifications

Programs

Exchanges

Storage

July 12, 2022

Long Term Actions



SWP Dependent Area

West Region Drought Actions

Additional Long-Term Actions



System Infrastructure Modifications

Programs

Exchanges

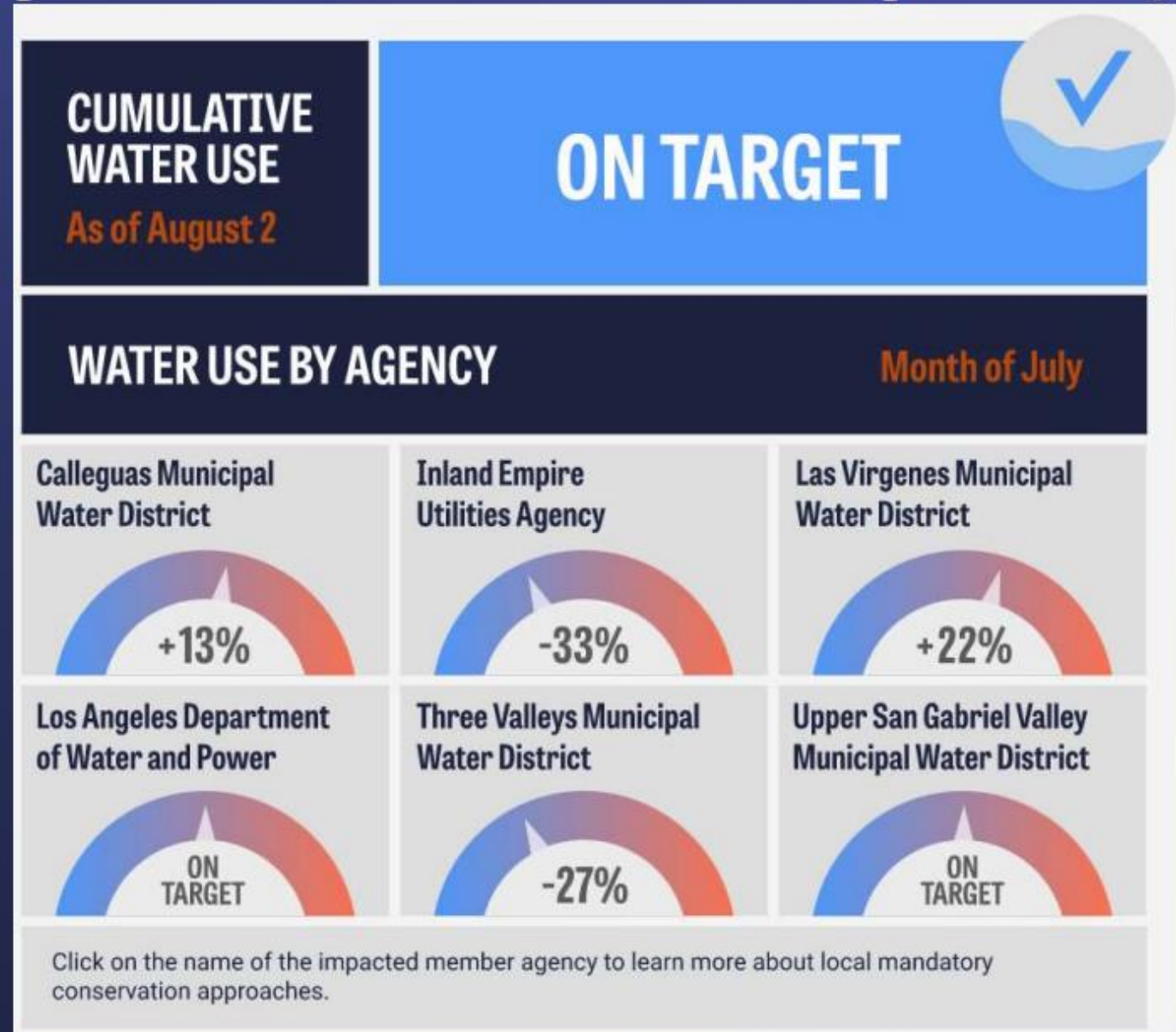
Storage

July 12, 2022

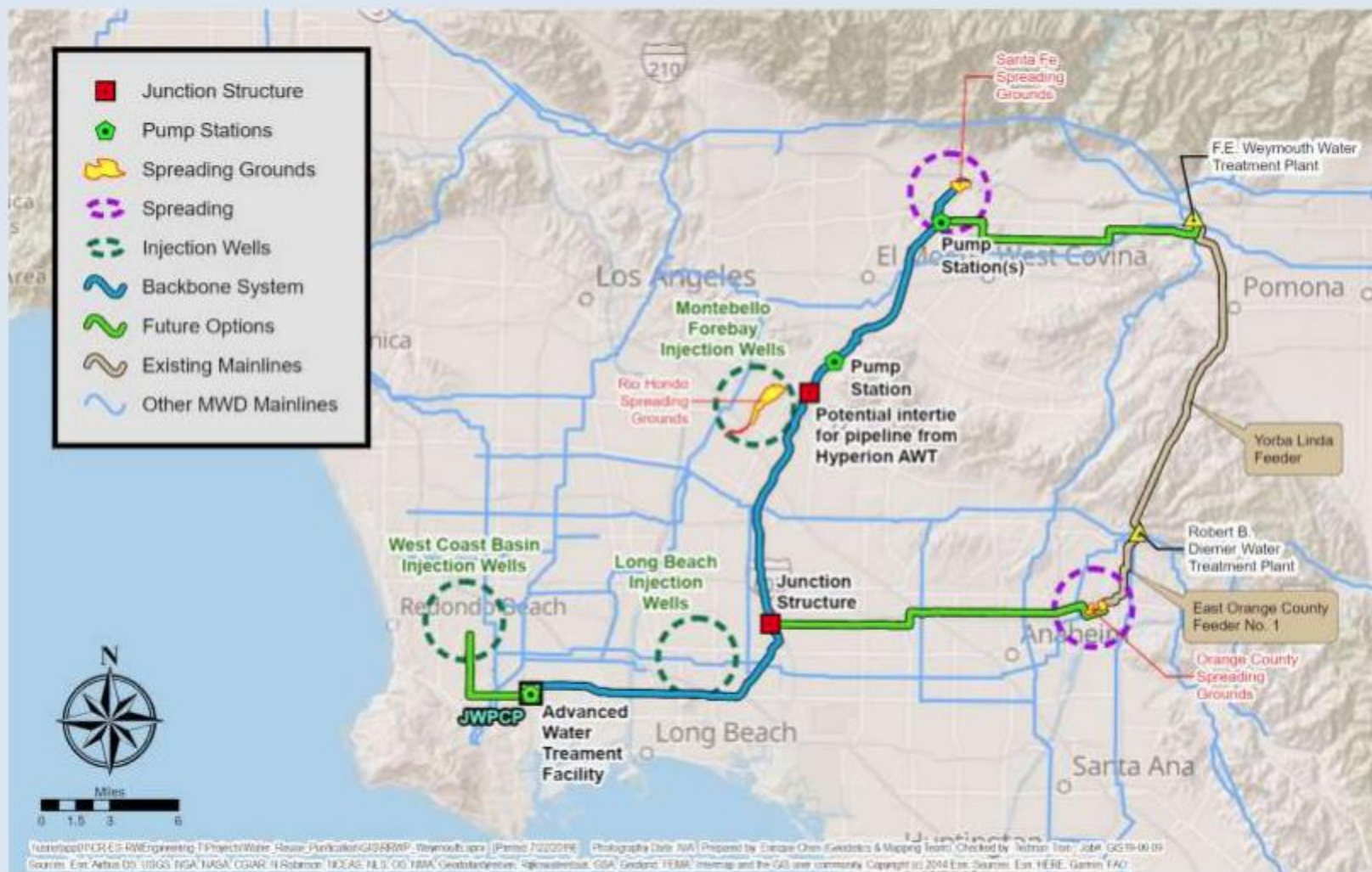
Emergency Water Conservation Program

External Tracking

<https://www.mwdh2o.com/how-we-plan/drought/>



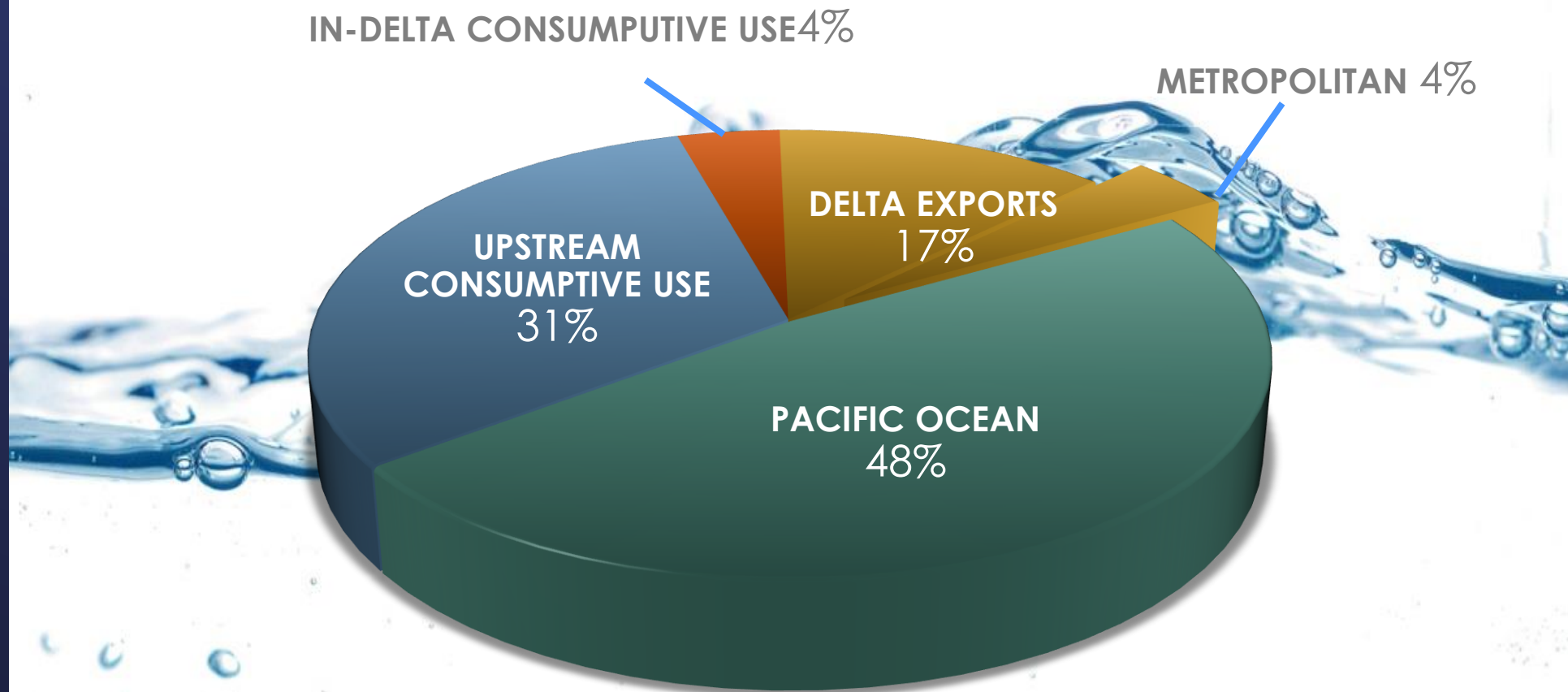
PROGRAM ELEMENTS



Update Delta Conveyance Project

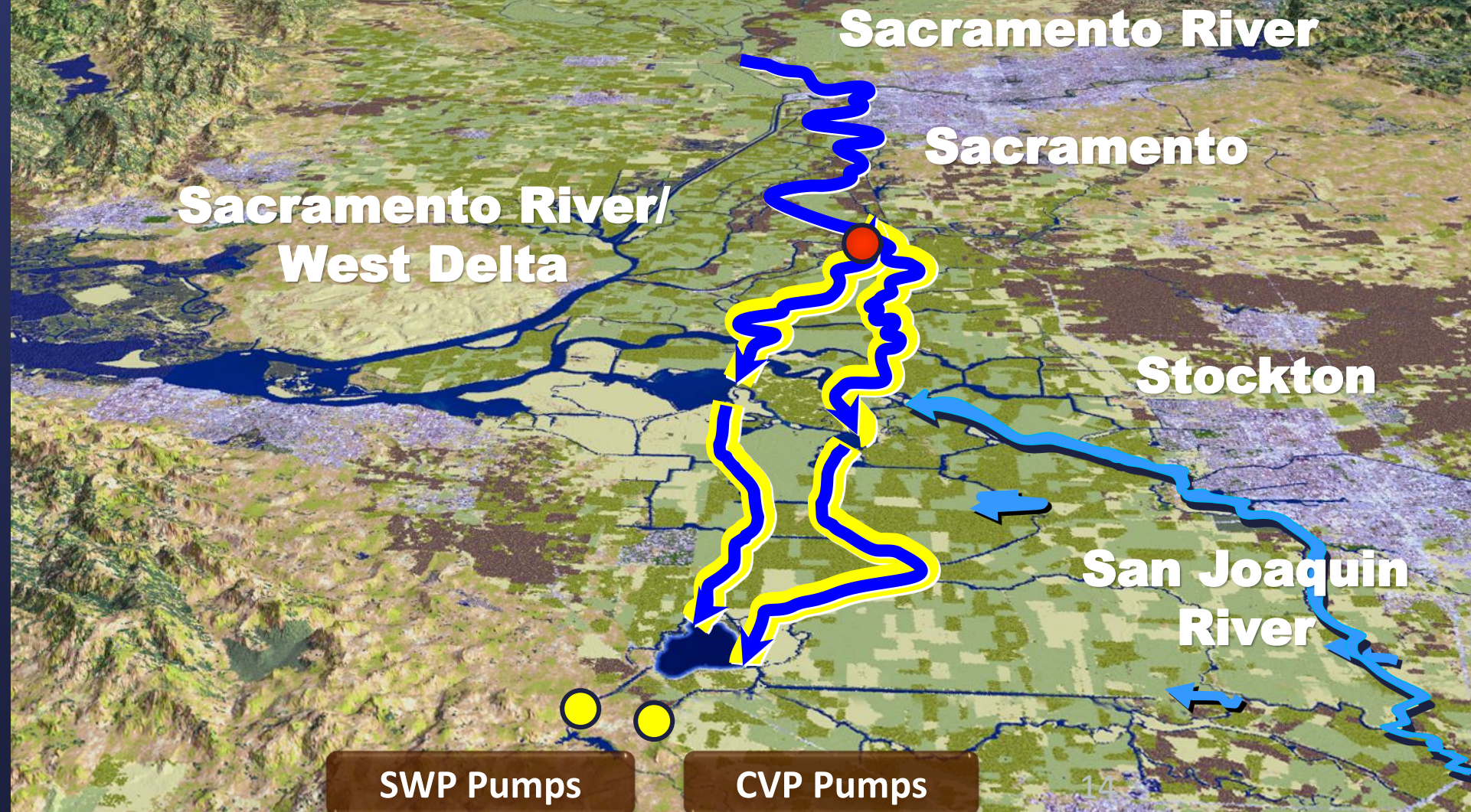


Water Flowing from Delta Watershed

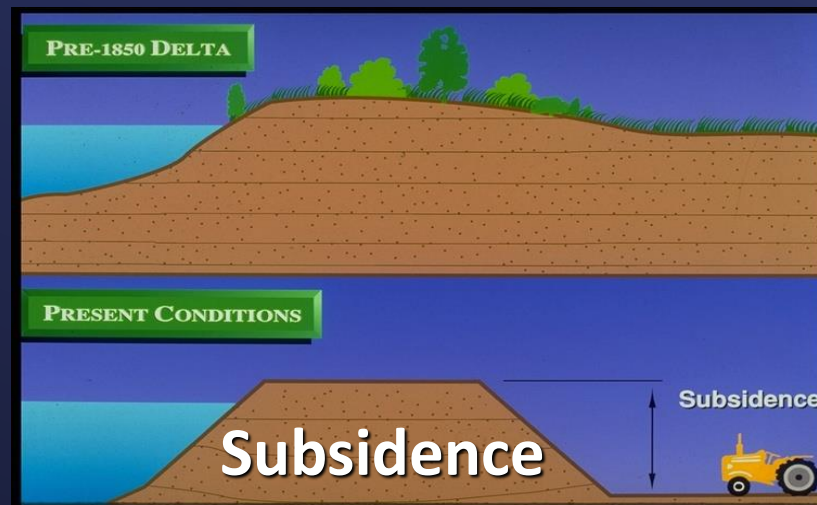
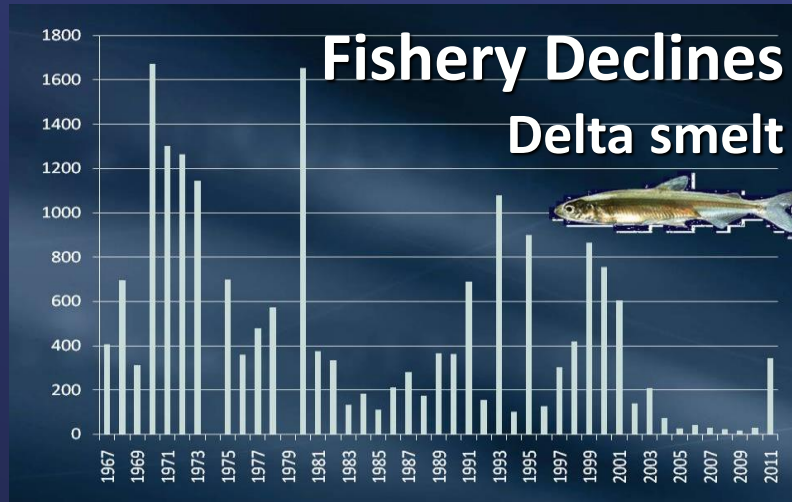


SOURCE: DELTA VISION REPORT (2007)
TIME PERIOD: 1990-2005
ESTIMATED TOTAL ANNUAL RUNOFF 32.85 MAF

Existing SWP and CVP Export Facilities are Located in the South Delta



Key Delta Risks



Delta Conveyance – Engineering Summary

Three Alignments

- Central
- Eastern
- Bethany

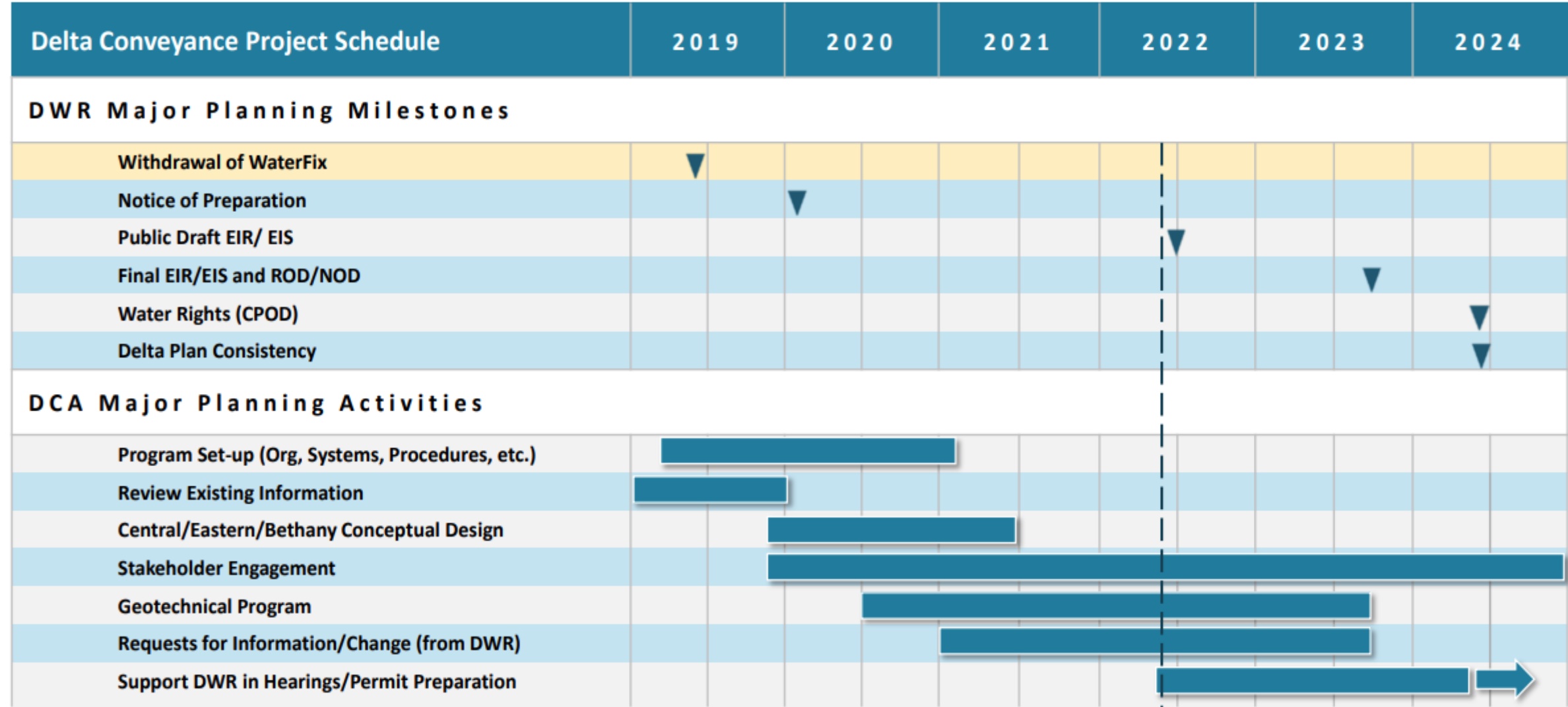
Two Engineering Project Reports

- Central/Eastern Alternatives
- Bethany Reservoir Alternative

Four Capacity Options

- 3,000 cfs
- 4,500 cfs
- 6,000 cfs – Proposed Project
- 7,500 cfs





Current Date



Newsom's Water Strategy

Create 4 MAF of new storage

Recycle and reuse 800,00 AF/yr by 2030

Free up 500,00 AF of water via conservation

Enhance water supplies through stormwater capture and desalination of ocean and brackish waters.

Small Changes Can Make A Big Difference

Everyday Ways to Save

Reducing household water use is simple, here's how much residents can save with the following actions:

